



Product & Service Guide

The North American Leader in
Truck-Mounted Aerial Work Platforms



The Safest and Most Efficient
Way to Work at Extreme Heights

TABLE OF CONTENTS

ABOUT US	2
Our History	2
Safety	4
Industries Served	6
BRONTO INVENTORY	9
SUPPORT & TRAINING	38
Parts & Service	38
Training	39
CARES	40

Our History

We offer the largest fleet of self-propelled aerial work platforms above 150 feet. Our units are located all across North America, which allows us to provide better availability, lower mobilization costs, and lower overall rates. All of our aerial trucks are manufactured by Bronto Skylift and have been specifically built to meet all North American DOT regulations, ANSI standards, and OSHA requirements.

HOLT AERIAL

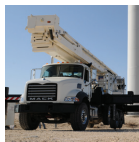


2010 Introduced the first truck-mounted aerial platforms above 250 feet to North America with two S295 HLA Bronto Skylifts, pioneering a new era in safety across America.



2013 Became the first to introduce the Bronto S230 XDT, the lightest and

most advanced aerial lift between 200 feet and 250 feet ever seen in North America.



2014 Keith Darby, General Manager, is awarded "Access Professional of the Year" for his outstanding leadership and implementation of training and safety.



2015 Established a new headquarters in Austin, TX and expanded fleet by 40%.



2016 Named the Wind Energy Sub-Supplier of the year, proving our strong commitment to service.



2017 Named a Bronto Skylift North American Distributor.



2018 HOLT Aerial (then Kardie Equipment) and Bronto Skylift strike a deal to offer the first consignment stock in North America.



2021 Kardie Equipment (now HOLT Aerial) is acquired by HOLT Group.



2024 Kardie Equipment/TGM Wind Services is rebranded as HOLT Aerial.



Safety

HOLT Aerial believes in the safety of our employees, customers, and job space above all. As the industry leader in elevated work platforms at heights of 150 feet and above, it is important for us to also be the industry leader in safety. We promote, train, and continuously encourage safety first. We have pushed our company to strive for continuous improvement year after year. **HOLT Aerial** maintains one of the highest safety records and lowest Experience Modification Rating (EMR) within the industry and we work hard to ensure this culture continues to be at the forefront of all that we do.

The safety features of all of our Brontos have been optimized by continuous development and tested by customers in the toughest conditions. Standard safety features include:

- **Rigid work platform permanently attached to the telescopic boom to allow for safe operation in windy conditions (even at speeds of over 25mph)**
- **Two emergency descent systems**
- **Bronto+ control system and easy overall maneuverability to enable smooth, accurate, and safe operation near structures and targets**
- **Twin cylinders on the main boom to enhance sideways stability and safety, along with a shorter cylinder design to increase storage space on the decking**
- **15 minute setup time with just one operator and one spotter using the advanced outrigger and basket control panels**



HOLT AERIAL

ANSI 92.2

ANSI/SAIA A92.2-2006 (R2014): Vehicle Mounted Elevating and Rotating Work Platforms. American National Standards Institute (ANSI) is the voice of the U.S. standards and conformity assessment system. The Institute oversees the creation, dissemination, and use of thousands of norms and guidelines that directly impact businesses in nearly every business sector.



Best Practices

HOLT Aerial is dedicated to the best practices related to the training and safe use of our truck-mounted aerial work platforms. We recognize that proper use of our Bronto Skylifts achieves successful project completion and assures operator safety. This is particularly critical when working with platforms that range in working heights of 150 to 295 feet. Our top priority is to make sure that everyone who comes in contact with the Bronto Skylift has a clear understanding of his or her role in the requirements for the safe use of that equipment.



Annual Inspections

Among the criteria set for aerial work platforms by the American National Standards Institute (ANSI) is the mandatory Annual Inspection of each of our trucks. Our qualified and experienced mechanics perform wide-ranging inspections on all of our trucks, which cover structural components such as outriggers, booms, turrets, and substructures, as well as safety items such as emergency backup systems. In addition to our own units, **HOLT Aerial** is an Authorized Bronto Skylift Distributor and provides inspection services for customer-owned Brontos as well.



Operator Training

All **HOLT Aerial** operators receive training (both in-classroom and on-site) that meets or exceeds the criteria set forth by the manufacturer, Bronto Skylift. This training includes emergency procedures, troubleshooting tactics, and safe practices for operating and driving. Once completed, all operators will receive a Bronto Operators Certification.



For more information on Operator Training, see page 37.

Industries Served

As the industry leader, HOLT Aerial has the largest fleet of truck-mounted aerial work platforms in North America. We are also the largest distributor for Bronto Skylift. Since 2010, our truck-mounted aerial equipment rental fleet, which has grown to over 40 units, has pioneered aerial access in the renewables sector for the world's largest wind companies. However, we did not stop there. We have proved capabilities in new industries including: Transmission & Distribution, Petrochemical & Refining, Aerospace, Construction and Telecommunications.





BRONTO INVENTORY

Our fleet offers extensive outreach and flexible working capabilities in a variety of settings. We provide the safest, most efficient and reliable truck-mounted aerial work platforms that offer 50 feet negative reach, up to 341 feet vertically and 131 feet of horizontal reach.



We sell new and used inventory!
Call us today: 888-958-0499

This product guide may not reflect our current inventory. If you have questions about purchasing custom insulated or non-insulated units, please contact us at sales@HoltAerial.com.

BRONTO S150 XDT



KEY FEATURES

- 150 ft / 46 m vertical reach
- Automatic outrigger leveling
- 110 volts at platform level with generator at ground level (generator not included)
- Extendable platform: 3' x 11'
- Voice on Command intercom from platform to turntable
- Battery backup operation system
- Manual emergency bleed off system
- Integrated wind speed indicator
- 28 mph max wind speed
- Automatic platform leveling
- Meets emissions laws for all states, including CA



AERIAL DATA

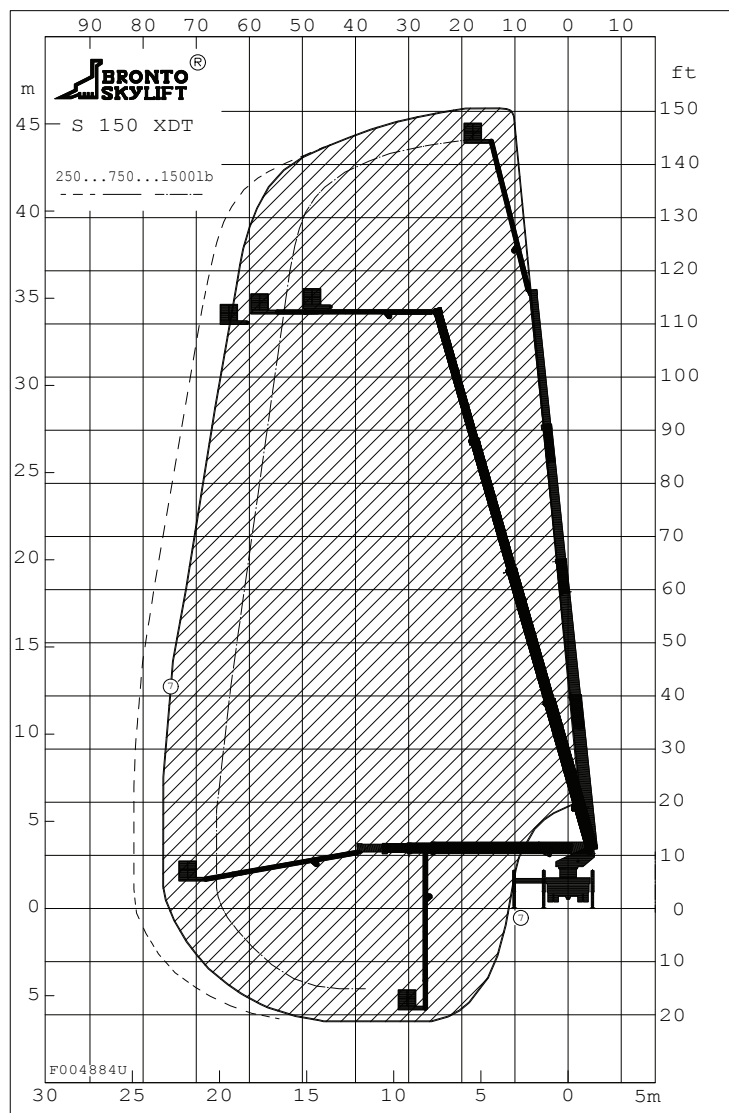
Max Platform Height:	150 ft / 46 m
Max Outreach:	81 ft / 25 m
Basket Capacity:	1,300 lbs / 600 kg
Turntable Rotation:	360°

CHASSIS DATA

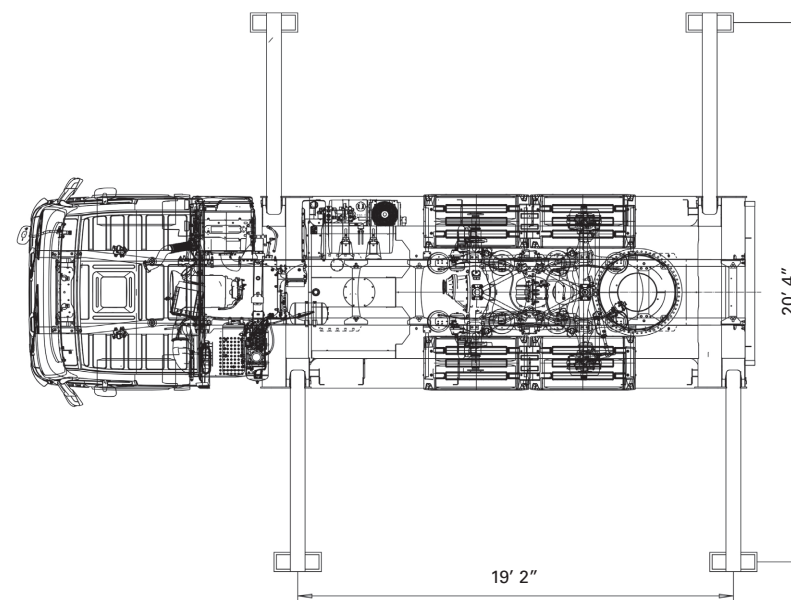
Make and model:	Options available
Engine:	Options available
Approx Weight:	54,000-60,000 lbs

BRONTO S150 XDT

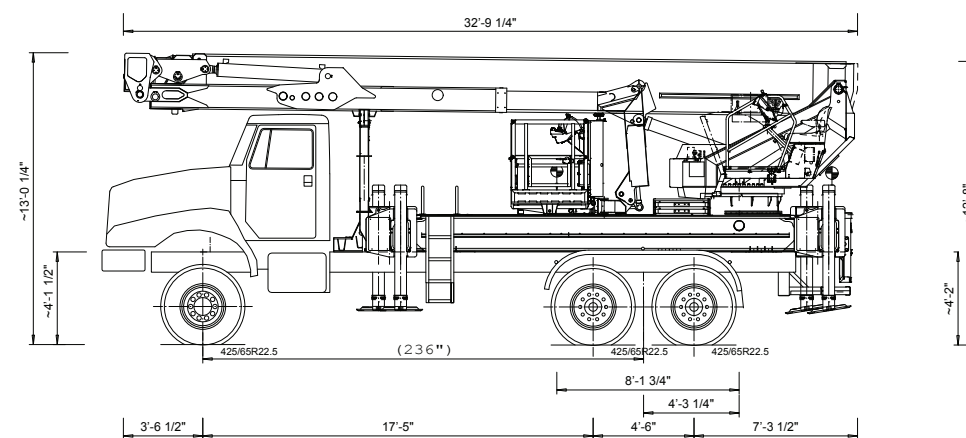
150 XDT WORKING ENVELOPE



OUTRIGGER FOOTPRINT



AXLE WEIGHT & SPACINGS



BRONTO S173 XDT



KEY FEATURES

- 173 ft / 53 m vertical reach
- Automatic outrigger leveling
- 110 volts at platform level with generator at ground level (generator not included)
- Extendable platform: 3' x 11'
- Voice on Command intercom from platform to turntable
- Battery backup operation system
- Manual emergency bleed off system
- Integrated wind speed indicator
- 28 mph max wind speed
- Automatic platform leveling
- Meets emissions laws for all states, including CA

AERIAL DATA

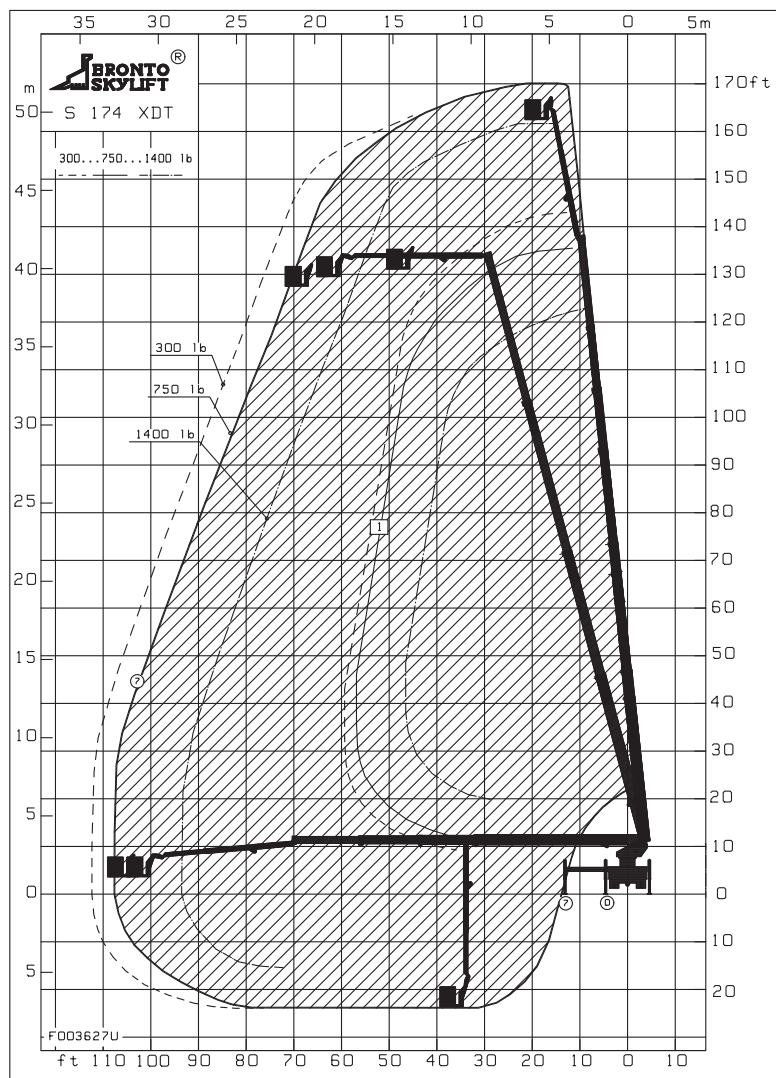
Max Platform Height:	173 ft / 53 m
Max Outreach:	110 ft / 34 m
Basket Capacity:	1,300 lbs / 600 kg
Turntable Rotation:	360°

CHASSIS DATA

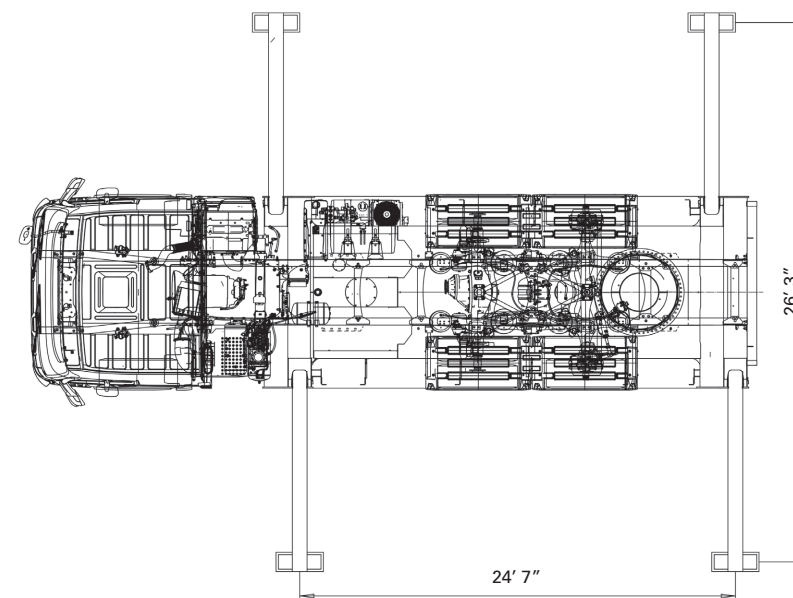
Make and model:	Options available
Engine:	Options available
Approx Weight	61,000-66,000 lbs

BRONTO S173 XDT

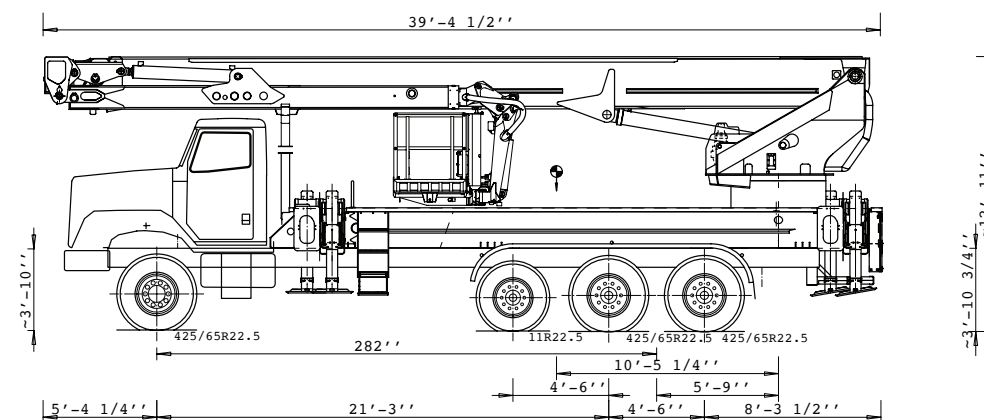
173 XDT WORKING ENVELOPE



OUTRIGGER FOOTPRINT



AXLE WEIGHT & SPACINGS



BRONTO S183 XR



KEY FEATURES

- 183 ft / 56 m vertical reach
- Automatic outrigger leveling
- 110 volts at platform level with generator at ground level (generator not included)
- Extendable platform: 3' x 11'
- Voice on Command intercom from platform to turntable
- Battery backup operation system
- Manual emergency bleed off system
- Integrated wind speed indicator
- 28 mph max wind speed
- Automatic platform leveling
- Meets emissions laws for all states, including CA
- 220-degree basket rotation on XR units only

AERIAL DATA

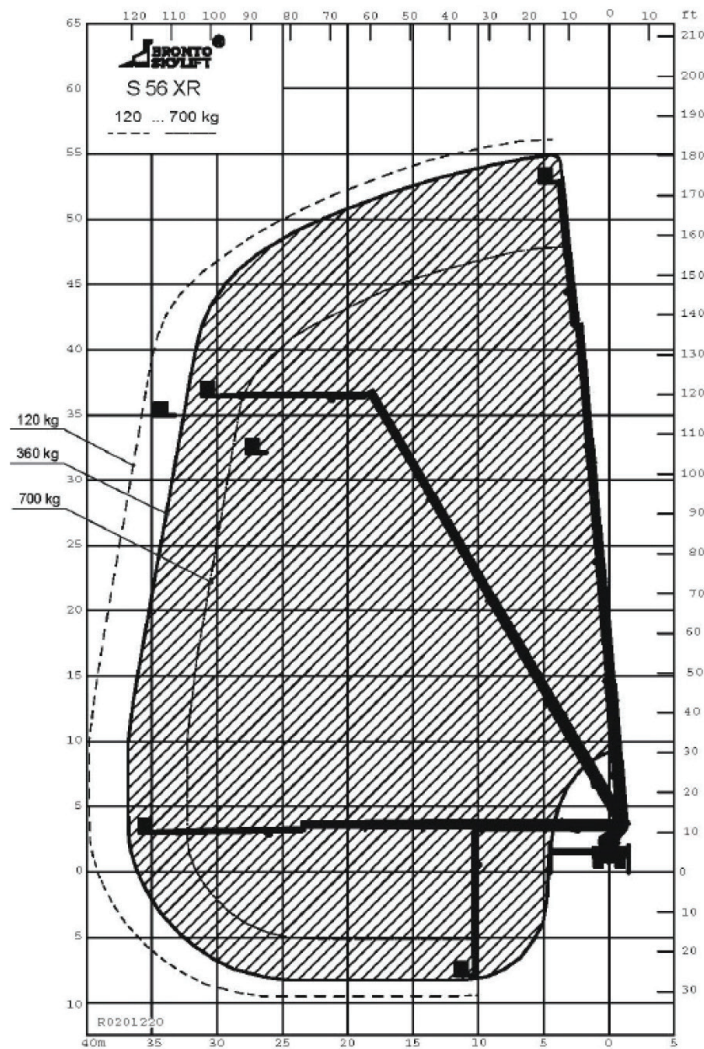
Max Platform Height:	183 ft / 56 m
Max Outreach:	131 ft / 40 m
Basket Capacity:	1300 lbs / 600 kg
Turntable Rotation:	360°

CHASSIS DATA

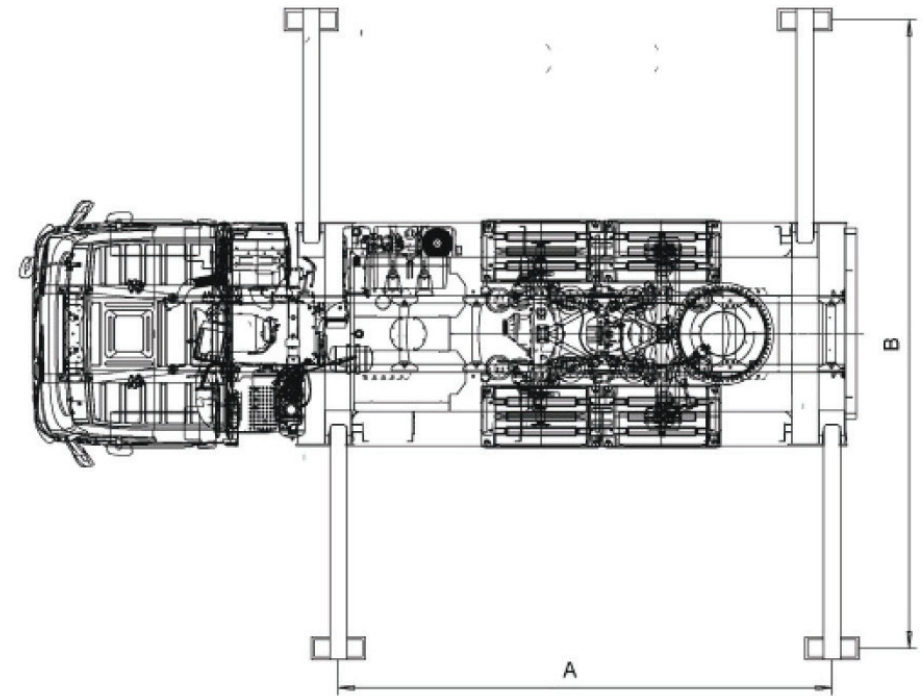
Make and model:	Options available
Engine:	Options available
Approx Weight:	64,000-69,000 lbs

BRONTO S183 XR

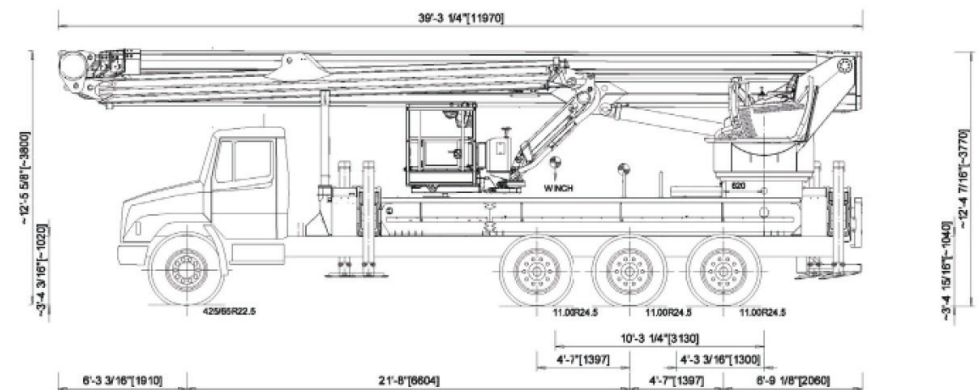
183 XR WORKING ENVELOPE



OUTRIGGER FOOTPRINT



AXLE WEIGHT & SPACINGS



BRONTO S230 XDT



KEY FEATURES

- 230 ft / 70 m vertical reach
- Automatic outrigger leveling
- 110 volts at platform level with generator at ground level (generator not included)
- Extendable platform: 3' x 11'
- Voice on Command intercom from platform to turntable
- Battery backup operation system
- Manual emergency bleed off system
- Integrated wind speed indicator
- 28 mph max wind speed
- Automatic platform leveling
- Meets emissions laws for all states, including CA

AERIAL DATA

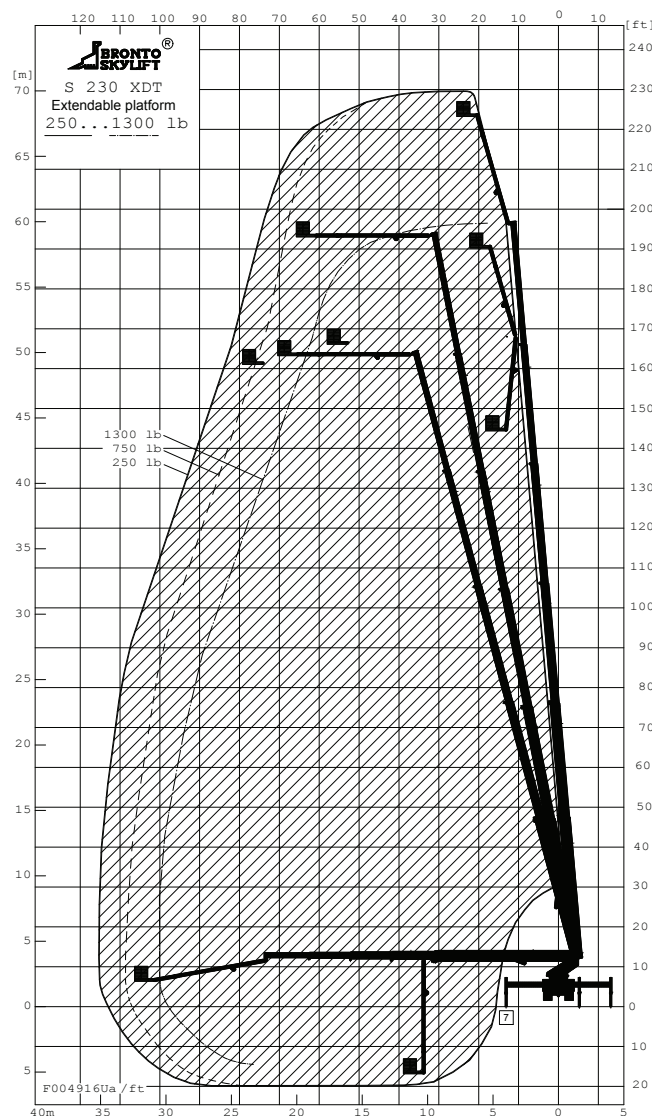
Max Platform Height:	230 ft / 70 m
Max Outreach:	105 ft / 32 m
Basket Capacity:	1,300 lbs / 600 kg
Turntable Rotation:	360°

CHASSIS DATA

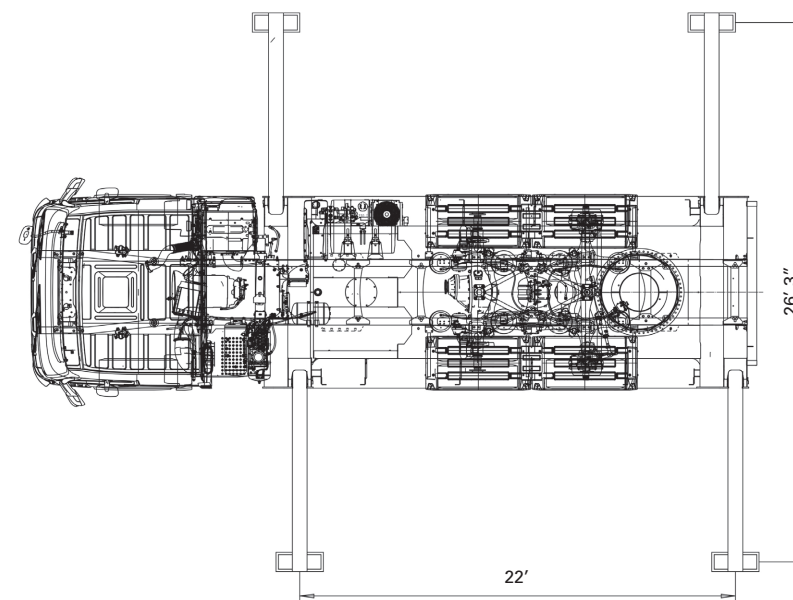
Make and model:	Options available
Engine:	Options available
Approx Weight:	80,000-83,000 lbs

BRONTO S230 XDT

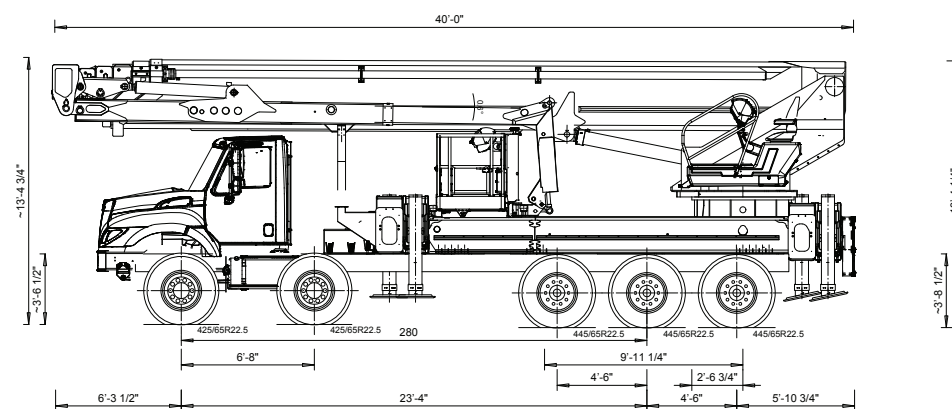
230 XDT WORKING ENVELOPE



OUTRIGGER FOOTPRINT



AXLE WEIGHT & SPACINGS



BRONTO S230 XR



KEY FEATURES

- 230 ft / 70 m vertical reach
- Automatic outrigger leveling
- 110 volts at platform level with generator at ground level (generator not included)
- Extendable platform: 3' x 11'
- Voice on Command intercom from platform to turntable
- Battery backup operation system
- Manual emergency bleed off system
- Integrated wind speed indicator
- 28 mph max wind speed
- Automatic platform leveling
- Meets emissions laws for all states, including CA
- 220-degree basket rotation on XR units only

AERIAL DATA

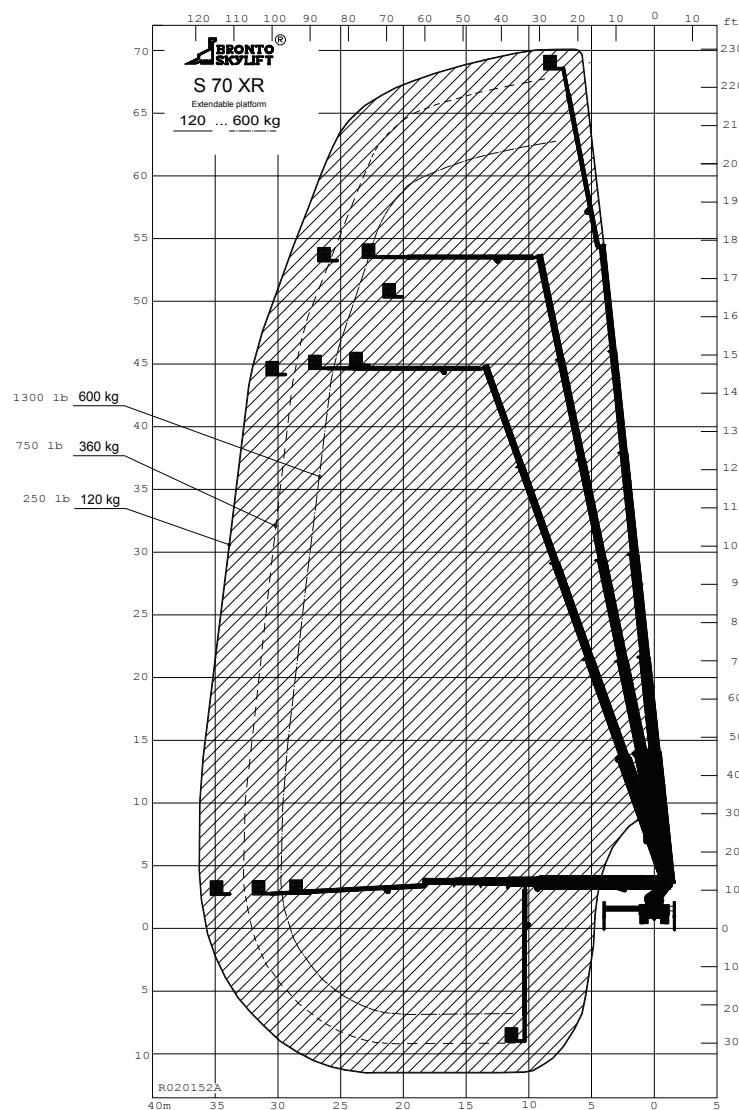
Max Platform Height:	230 ft / 70 m
Max Outreach:	115 ft / 35 m
Basket Capacity:	1,300 lbs / 600 kg
Turntable Rotation:	360°

CHASSIS DATA

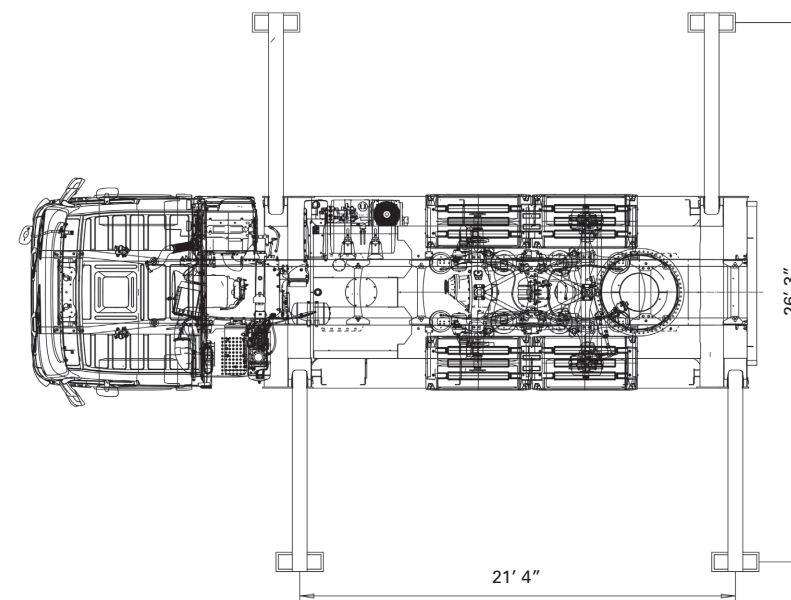
Make and model:	Options available
Engine:	Options available
Approx Weight:	76,000-79,999 lbs

BRONTO S230 XR

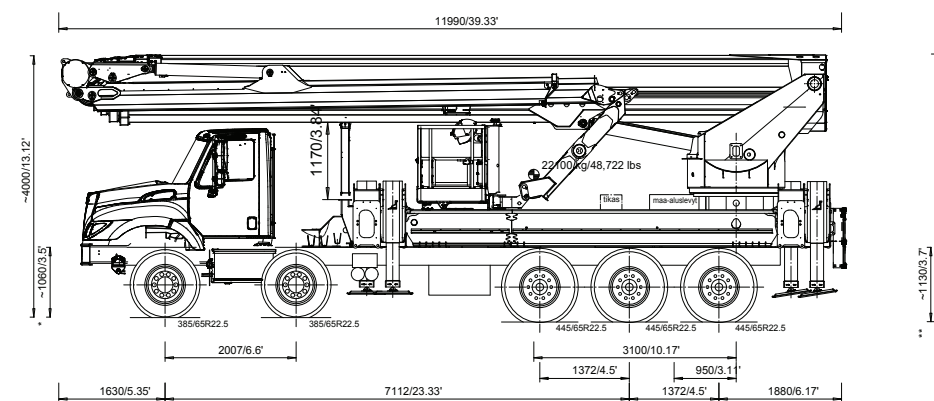
230 XR WORKING ENVELOPE



OUTRIGGER FOOTPRINT



AXLE WEIGHT & SPACINGS



BRONTO S295 HLA



KEY FEATURES

- 295 ft / 90 m vertical reach
- Automatic outrigger leveling
- 110 volts at platform level with generator at ground level (generator not included)
- Extendable platform: 3' x 11'
- Voice on Command intercom from platform to turntable
- Battery backup operation system
- Manual emergency bleed off system
- Integrated wind speed indicator
- 28 mph max wind speed
- Automatic platform leveling
- Meets emissions laws for all states, including CA
- Rear wheel steer for increased maneuverability

AERIAL DATA

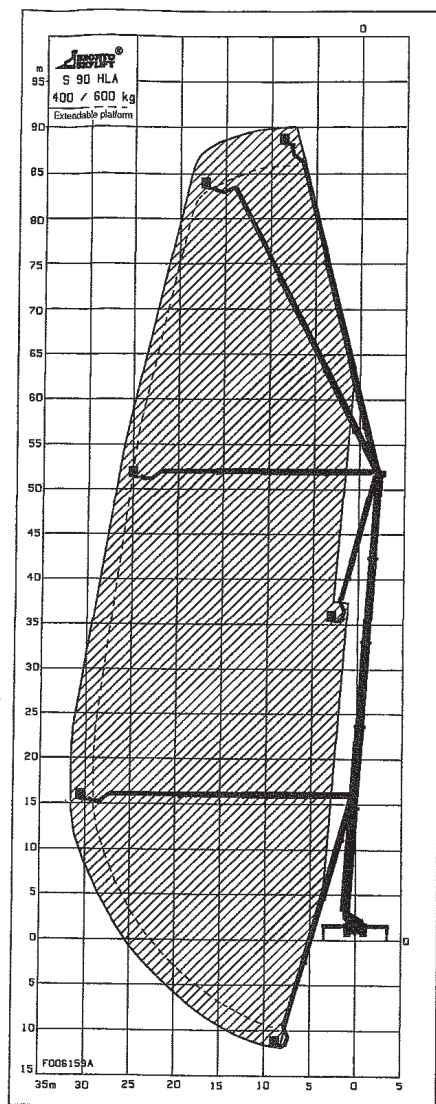
Max Platform Height:	295 ft / 90 m
Max Outreach:	100 ft / 30 m
Basket Capacity:	1,300 lbs / 600 kg
Turntable Rotation:	360°

CHASSIS DATA

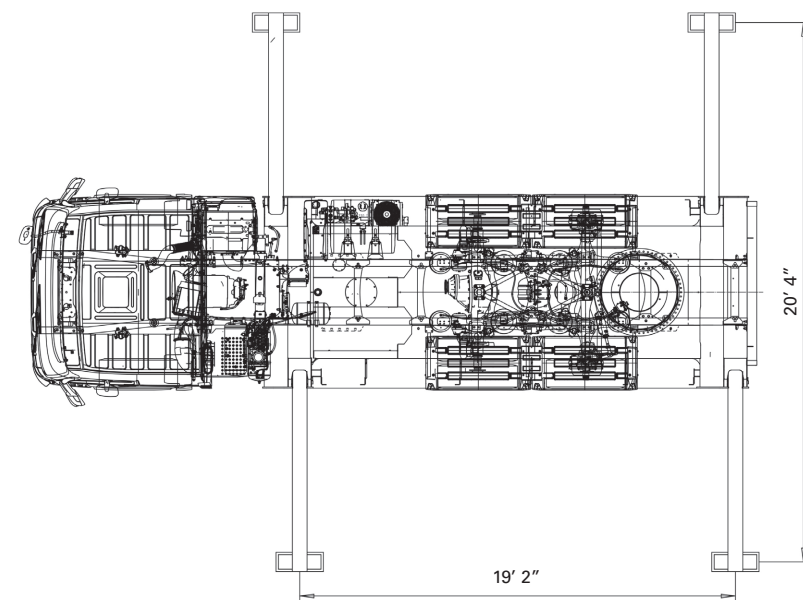
Make and model:	Options available
Engine:	Options available
Approx Weight:	110,000 - 115,000 lbs

BRONTO S295 HLA

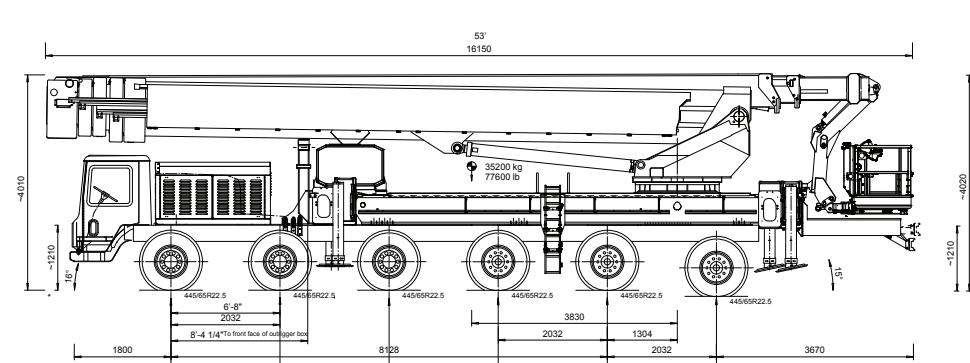
295 HLA WORKING ENVELOPE



OUTRIGGER FOOTPRINT



AXLE WEIGHT & SPACINGS



BRONTO 341



KEY FEATURES

- 341 ft / 104 m vertical reach
- Automatic outrigger leveling
- 110 volts at platform level with generator at ground level (generator not included)
- Extendable platform: 3' x 11'
- Voice on Command intercom from platform to turntable
- Battery backup operation system
- Manual emergency bleed off system
- Integrated wind speed indicator
- 28 mph max wind speed
- Automatic platform leveling
- Meets emissions laws for all states, including CA
- Rear wheel steer for increased maneuverability

AERIAL DATA

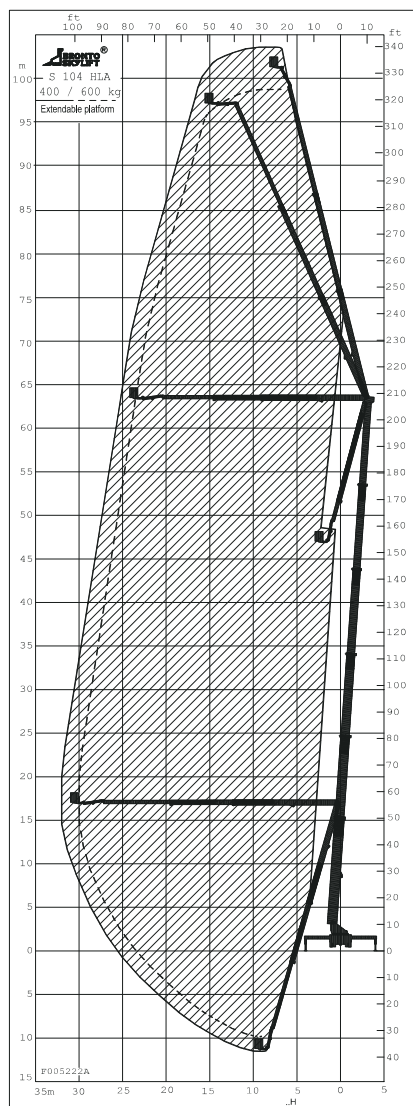
Max Platform Height:	341 ft / 104 m
Max Outreach:	100 ft / 30 m
Basket Capacity:	1,300 lbs / 600 kg
Turntable Rotation:	360°

CHASSIS DATA

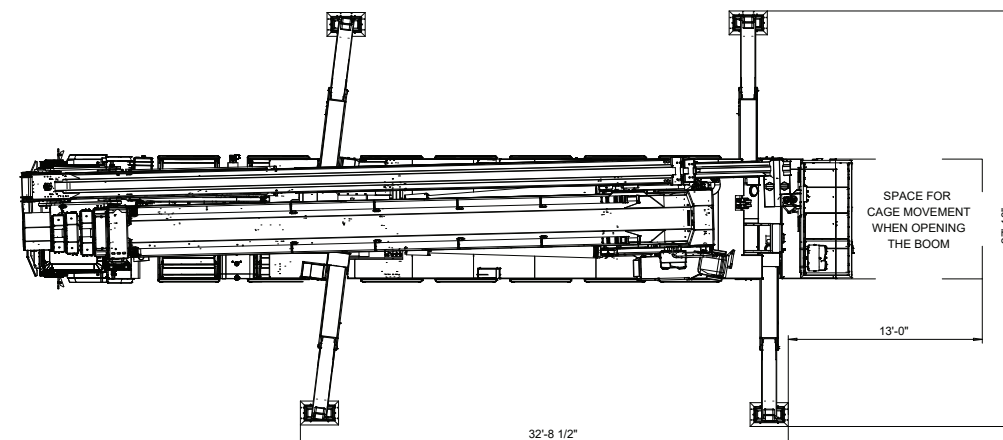
Make and model:	Options available
Engine:	Options available
Approx Weight:	142,000-145,000 lbs

BRONTO S341

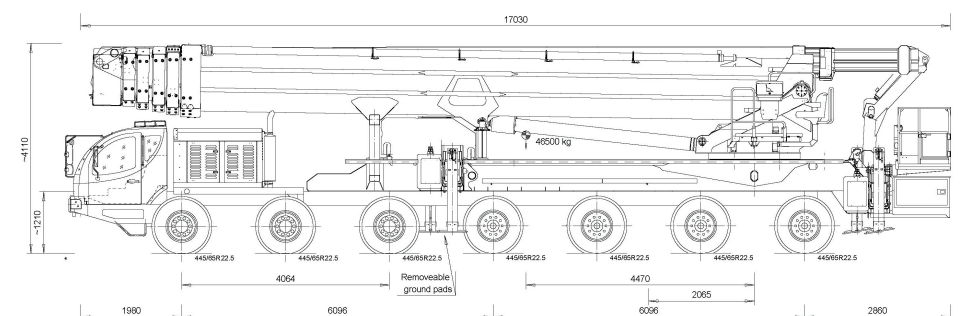
341 WORKING ENVELOPE



OUTRIGGER FOOTPRINT



AXLE WEIGHT & SPACINGS



Parts & Service

HOLT Aerial offers a hotline for parts and technical support for your Bronto Skylift. We are committed to providing you with comprehensive service, and no matter the fix, our staff will be sure to keep you updated every step of the way. Our inventory of parts is substantial and any parts in stock will be shipped the same day.



**Bronto Technical Support Hotline:
512.572.6720**

Training

HOLT AERIAL

Annual Recertification Training

**10-20
HOURS**

A required annual course for customers who have already been operating a Bronto for at least one year. Course reviews and refreshes previous course material and addresses situational examples.

Basket Controls Course

**20-30
HOURS**

This training demonstrates the skills needed for an individual to operate the Bronto from the basket controls and to be familiar with all tasks needed to perform this function safely. This course is for an "Operated Rental" customer who only needs to fly the basket. The customer will always have the support of a HOLT Aerial employee on the ground throughout the project. The HOLT Aerial employee will be responsible for the overall safety of the unit, moving the unit from location to location, outrigger setup, cradling/un-cradling of the booms, and equipment servicing and troubleshooting.

Operator Training Course

**30-40
HOURS**

This training teaches the required skills to be fully self-sufficient in all aspects of operating a Bronto aerial work platform. It also explains how to perform routine scheduled maintenance on a Bronto. Additionally, this course touches on some beginner troubleshooting skills and component identification to be able to perform some small repairs if needed in the field.

To learn more about our training program and its pricing, contact us at sales@HoltAerial.com

HOLT Aerial CARES

Our exclusive service program is designed to deliver durable parts and reliable service in a timely manner, to ensure your machine's performance is never compromised. At HOLT Aerial, we pride ourselves on a robust preventative maintenance program that will replace parts before they fail in the field, thus avoiding downtime and project delays. This optional service package is for customers who would like to skip the headache of maintaining their own Bronto. Our highly trained technicians will perform quarterly maintenance in the field and an annual inspection at our facility in Abilene, TX.



C

COMPLETE Performance Maintenance

Proactive quarterly and annual maintenance to minimize downtime in the field

A

ADVANCED Aerial Training Program

Certified Bronto operator training course with annual on-site recertification

R

REPAIR Capabilities

Largest group of Bronto Mechanics in North America

E

EFFICIENT Parts Guarantee

Extensive OEM parts inventory facilitated by expert technicians

S

SERVICE Commitment

Open communication from top to bottom, with mobile and remote support available on all projects

What's included:

- Aerial warranty
- Labor for quarterly/annual inspections
- Parts & Tech support
HOTLINE 512-572-6720
(business hours)
- Consumables (fluids for top off, grease, etc.)
- Annual maintenance certification after maintenance completed
- 40 hours of Operator training upon delivery, and annual recertification for one class up to 6 people
- 20% discount on Bronto parts
- Labor rate \$85 per hour with CARES customers

What's not included:

- Parts not covered under warranty
- Chassis
- Per diem (non-warranty items) = \$145 per night per person
- Parts & service for an additionally mounted generator

Since we have been proudly operating our own fleet of Bronto Skylifts for the last decade, we have the predictive analysis to determine the best maintenance intervals on a quarterly (on-site) and annual (Abilene, TX facility) basis.

The uptime of your machine is paramount to our team, and with technicians stationed geographically all over the country, we can provide on-site service within 72 hours and live call center support 7 days a week.





For more information, email
us at sales@HoltAerial.com,
call (888) 958-0499, or visit
HoltAerial.com

Connect with us on LinkedIn
[LinkedIn.com/Company/Holt-Aerial](https://www.linkedin.com/company/holt-aerial)

