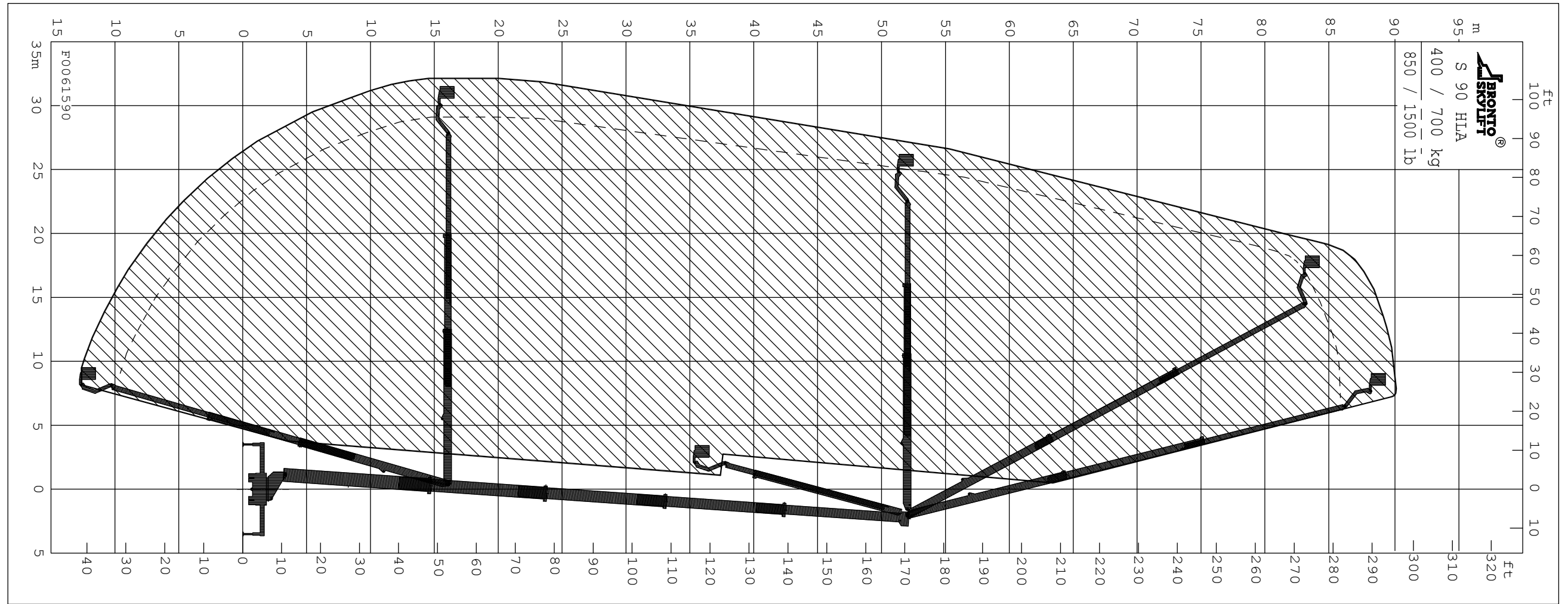


NOTE1:
NOTE2:
REMARKS PRELIMINARY



TECHNICAL DATA	
Safe working load max.	: 700 kg
Max. permitted wind speed	: 12.5 m/s
Typical GVW	: 48 ton
min. operating weight	: 47 ton
Outrigger width and length c/c - normal jacking	: 7.0/7.0 m
Calculation code	:

PRELIMINARY

All rights reserved Änderungen vorbehalten Sous réserve de modification		Valmistaja pidättää oikeuden muutoksiin Reservation för ändringar	
1	250	BRONTO SKYLIFT S 90 HLX	
(A3)		OUTREACH DIAGRAM	DRAWN KKe 2011-12-20
CODE:		SAFE WORKING LOAD 700 kg	APP'V'D
BRONTO SKYLIFT BRONTO SKYLIFT OY AB FINLAND		LAYER	DWG NUMBER F0061590
		REV	