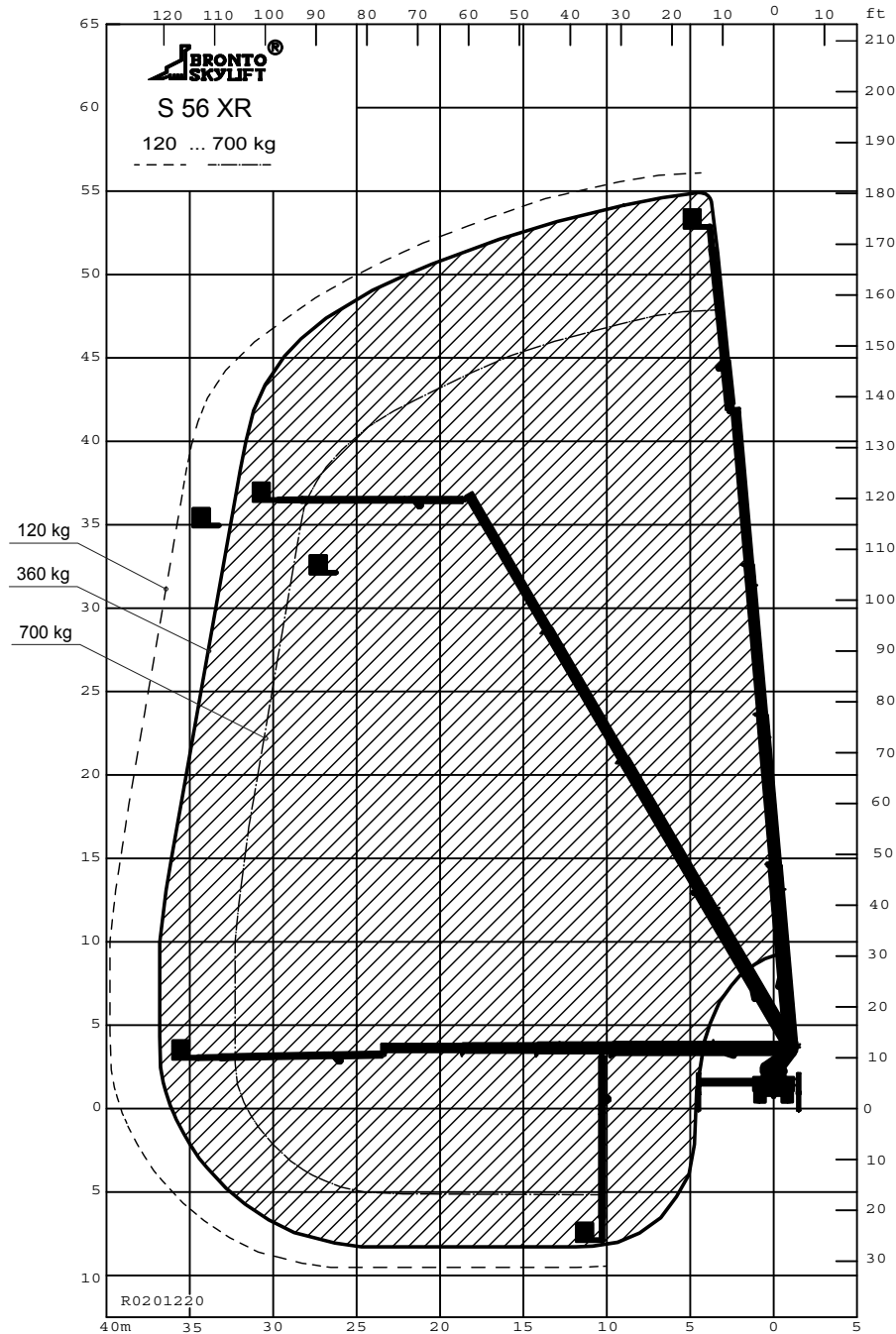


NOTE1:
 NOTE2:
 REMARKS: PRELIMINARY



TECHNICAL DATA	
Safe working load max.	: 700 kg
Max. permitted wind speed	: 12.5 m/s
Typical GWW	: 26 ton
min. operating weight	: 25 ton
Outrigger width and length c/c	
- normal jacking	: 9.0/7.5 m
- one side jacking	: 6.0/7.5 m
- narrow jacking	: 3.0/7.5 m
Calculation code	:

All rights reserved Änderungen vorbehalten Sous réserve de modification		Valmistaja pidättää oikeuden muutoksiin Reservation för ändringar	
1	225	BRONTO S 56 XR	
(A2)	OUTREACH DIAGRAM		DRAWN KKe 2014-02-03
0	SAFE WORKING LOAD MAX 700 kg		APP'V'1
BRONTO SKYLIFT BRONTO SKYLIFT OY AB FINLAND		LAYER TRWA	DWG NUMBER R0201220 REV
		BRONTOCAD	