



Bronto Skylift S 295 HLA



The S 295 HLA is an **aerial work platform** with a maximum working height of 295 feet.

- Equipped with the following:
- Extendable Basket (7ft to 10ft)
 - Remote "Compass" diagnostics
 - Redundant operating systems
 - Automatic outrigger leveling
 - Tool circuit platform
 - Hydraulic oil cooler
 - Integrated wind speed indicator
 - Two (2) 5/8 in-basket auxiliary lines
 - 11,000 watt Miller generator (opt)
 - Enhanced light package (opt.)
 - 360° drawer camera (opt.)

...And more

Aerial Specifications:

- Max. working height: 295 ft (90m)
- Max. height platform: 287 ft (87.5m)
- Max. outreach: 88 ft (27m)
- Max. reach below ground: 32 ft (9.75 m)
- Max. working load: 1500 lbs
- Turntable rotation, continuous: 360°

Chassis Specifications:

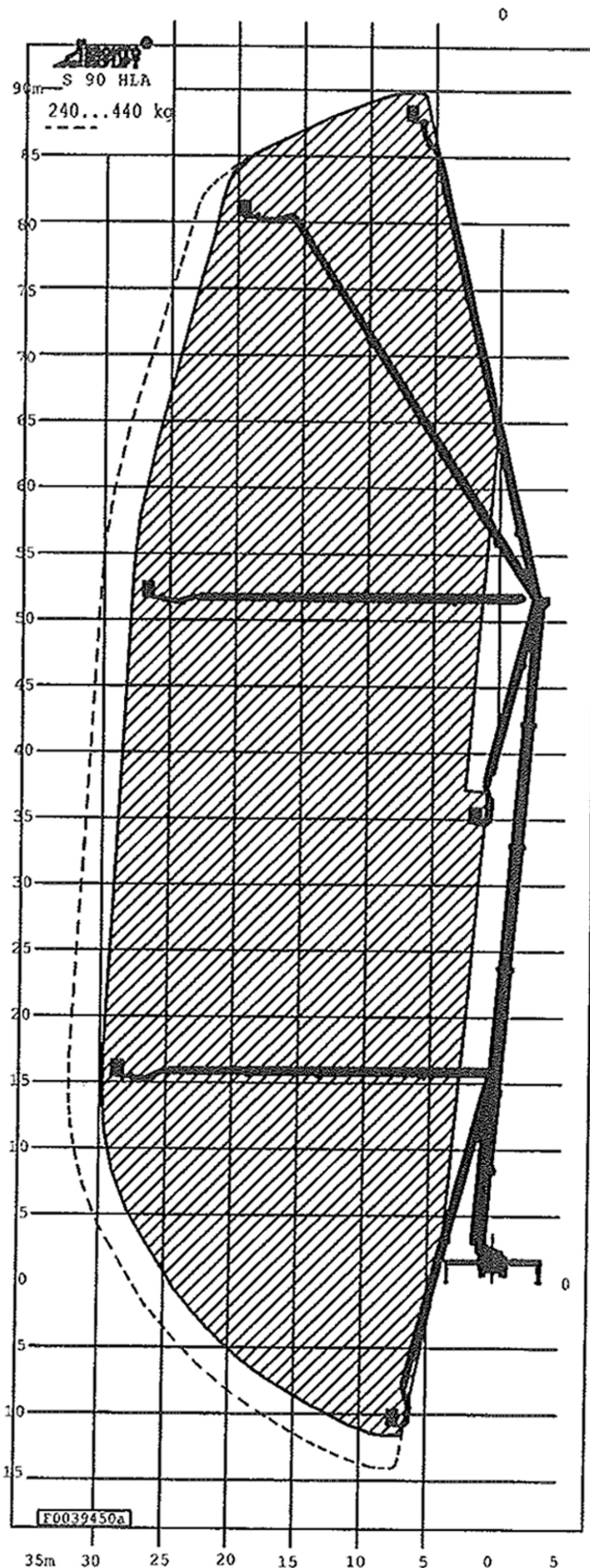
Model: 2019 TOR
All-Terrain 12 x 4 Drive

Engine: Cummins
X15 - 2017 EPA/CARB
505 HP @ 1800 RPM

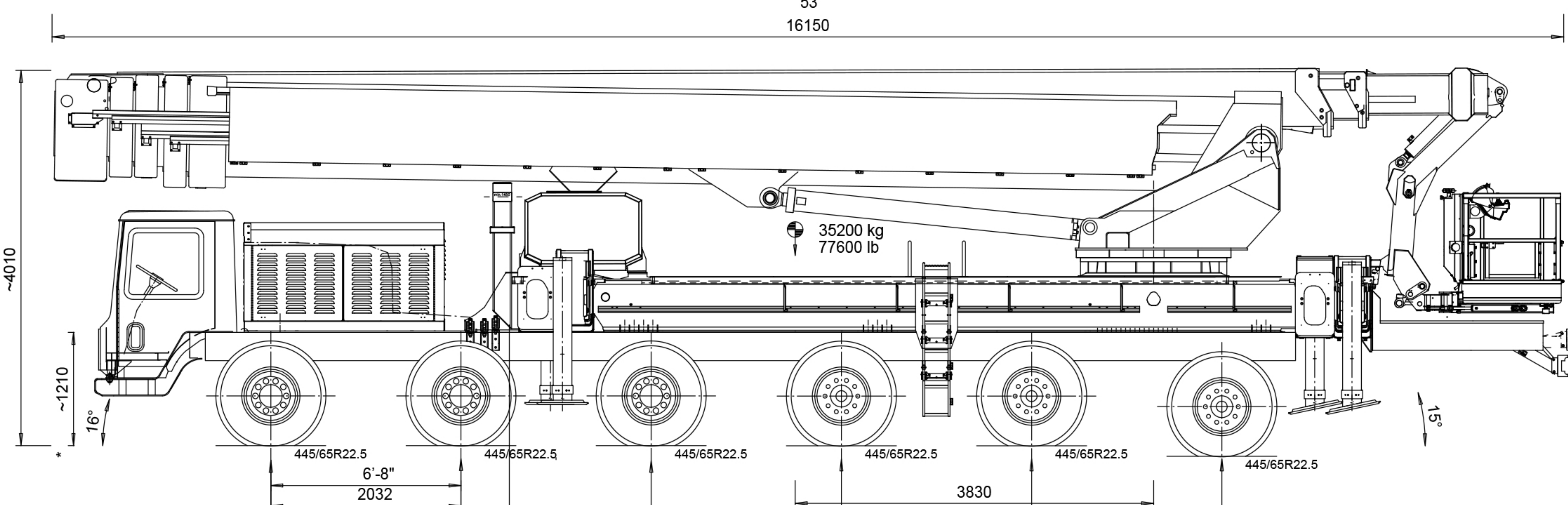
Transmission:
Allison 7 speed

Axle Capacity: 21,500 lbs (each)
(9,752 kgs)

Height: 13 ft 6 in
Length: 54 ft
Width: 102 in
Weight: 115,000 lbs (52,163 kgs)



53'
16150



Safety. Efficiency. Reliability.