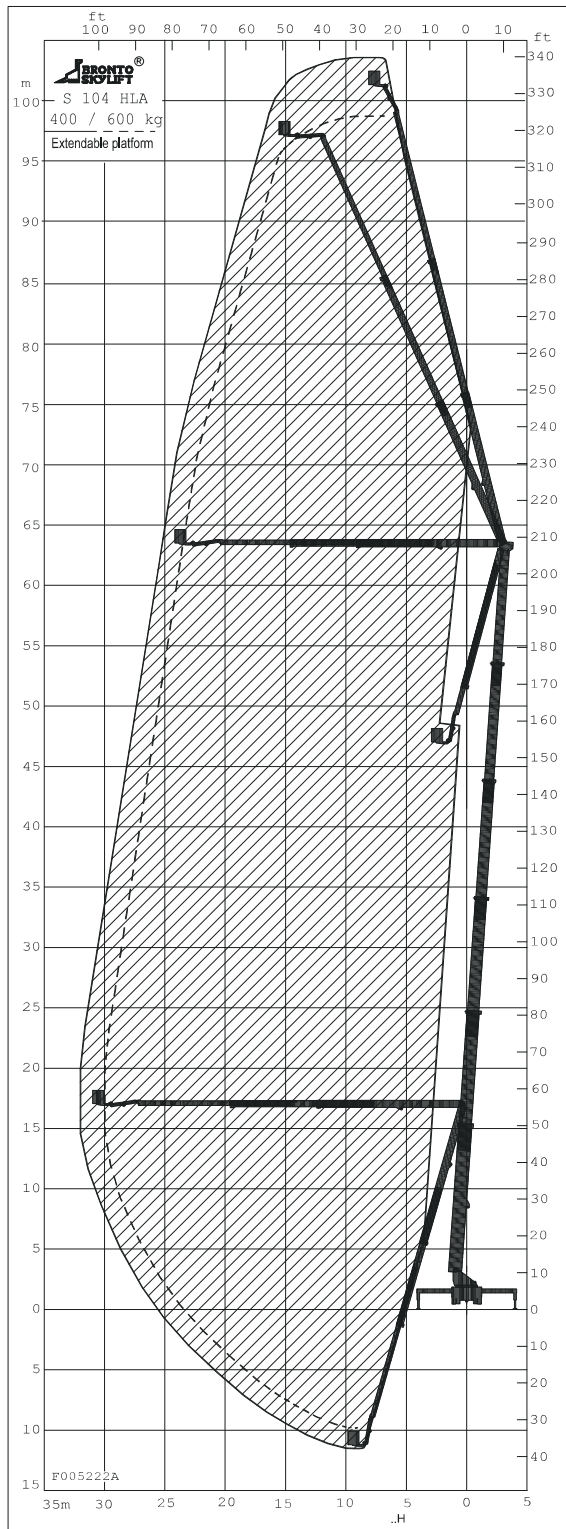


OUTREACH DIAGRAMS



TECHNICAL DATA

Safe working load max.	: 600 kg
Max. permitted wind speed	: 12.5 m/s
Typical GW	: 62.0 ton
min. operating weight	: 59.0 ton
Outrigger width and length c/c	: 8.0/8.3 m
- normal jacking	
Calculation code	: