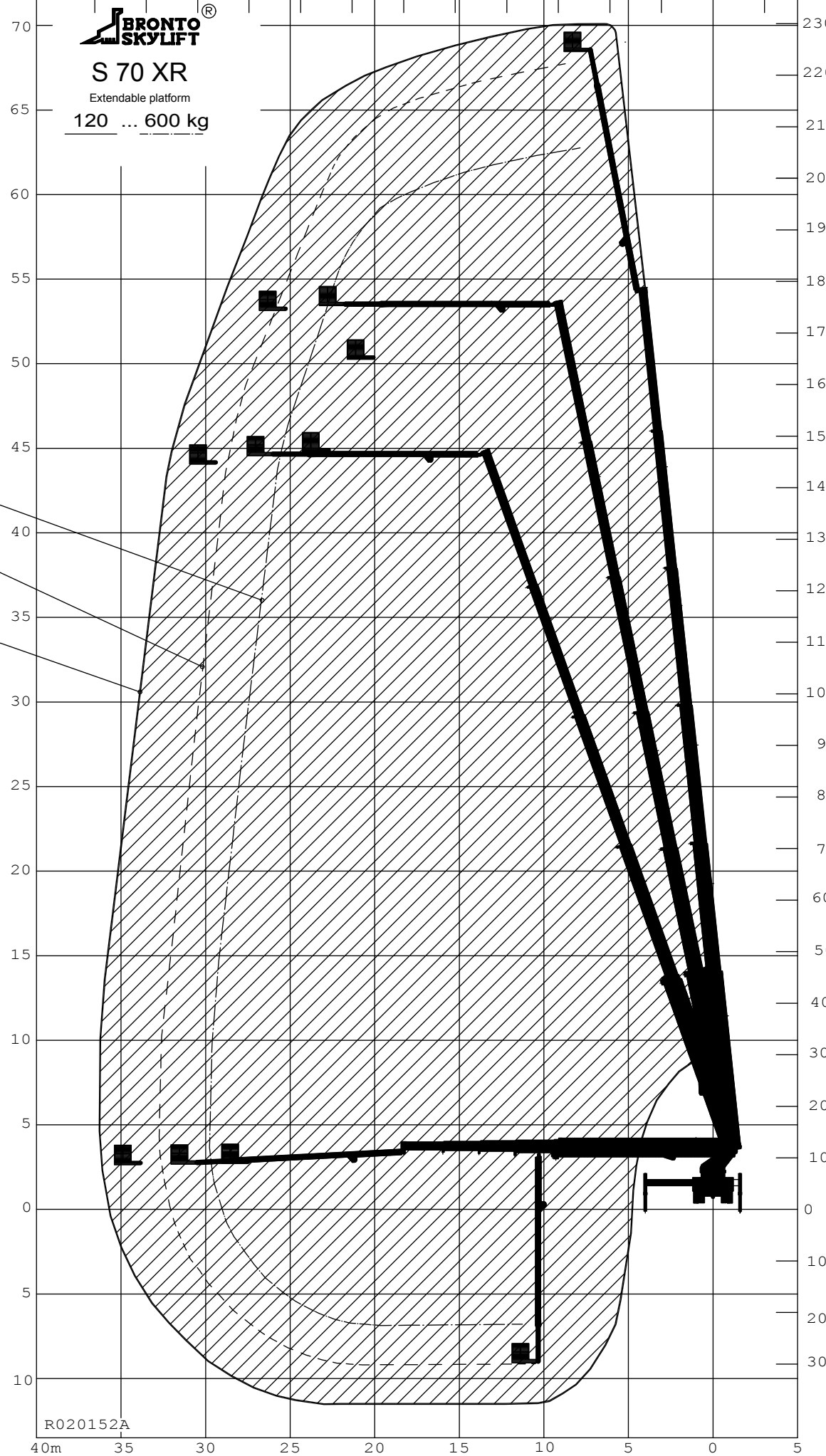


120 110 100 90 80 70 60 50 40 30 20 10 0 10 ft

BRONTO SKYLIFT
S 70 XR
 Extendable platform
 120 ... 600 kg

1300 lb 600 kg
 750 lb 360 kg
 250 lb 120 kg



TECHNICAL DATA	
Safe working load max.	: 1300 lbs. 600 kg
Max. permitted wind speed	: 28 mph 12.5 m/s
Typical GVW	: 32 ton
min. operating weight	: 31.4 ton
Outrigger width and length c/c	
- normal jacking	: 26.25'/21.33' 8.0/6.5 m
- one side jacking	: 18.37'/21.33' 5.6.2/6.5 m
- narrow jacking	: 10.5'/21.33' 3.2/6.5 m
Calculation code	:

EU

PRELIMINARY

All rights reserved
 This specification may be revised without notice.
 This document, which is our exclusive intellectual property, shall be treated as strictly private and confidential and shall neither be copied nor communicated to any third person without our written consent.
 BRONTO SKYLIFT OY AB
 Tampere Finland

ULOTTUVUUSKAAVIO
 RÄCKVIDSDIAGRAM
 OUTREACH DIAGRAM
 ARBEITSDIAGRAM
 DIAGRAMA DE TRABAJO
 РАБОЧАЯ СХЕМА

SYSTEM Vertex G4	Massa kg	Las	Pun	Yleistoleranssit Koneistus : SFS4011 Keski Meisto : SFS4012 Levy- ja Hitsustyöt: BBS 2.51
	Suunnittelija RKe	2016-08-17		
Hittakaava	Arkkikoko	Status		
: 225 A2				



This drawing is property of Bronto Skylift. Reproduction prohibited without authorization.

R020152A

Rev.	Muutosno.	Muutos	Pvm	Muut.

Nimitys
 Ulottumakaavio
 S 70 XR, Levitettävä työkori

Piirustus nro.
R020152A
 Rev.